



neo  
-CAFFÈ-

KRUPS





Antes da primeira utilização, consultar o folheto Instruções de segurança para evitar possíveis lesões e danos

Before first use, please refer to the Safety Instructions leaflet to avoid possible harm and damage

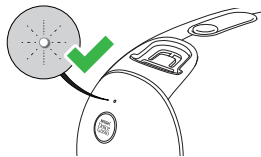


Ler o Manual do utilizador no site da marca [www.dolce-gusto.pt](http://www.dolce-gusto.pt) para obter instruções mais detalhadas  
Read the User Manual on our website for more detailed instructions

	<b>PT / GB / IE:</b> 220 – 240 V, 50/60 Hz, 1340 – 1600 W
	<b>Frequência do módulo BLE/WiFi</b> Frequency of BLE/WiFi module <ul style="list-style-type: none"><li>• BLE: 2402 - 2480 MHz</li><li>• WiFi: 2412 - 2484 MHz</li></ul>
	<b>Potência máxima emitida pelo módulo</b> Maximum power emitted by the module <ul style="list-style-type: none"><li>• BLE: 0 dBm ou / or 1 mW</li><li>• WiFi: +20 dBm ou / or 100 mW</li></ul>
	<b>Consumo de energia no modo standby</b> Consumption in Standby mode <ul style="list-style-type: none"><li>• &lt; 50 mW</li></ul>



# CONECTE A SUA MÁQUINA CONNECT YOUR MACHINE



Personalização da chávena  
Cup customisation



Novo pedido inteligente  
Smart re-order



Receba Ofertas exclusivas em cada bebida  
Reward for every cup



Ajuda e suporte  
Help and support

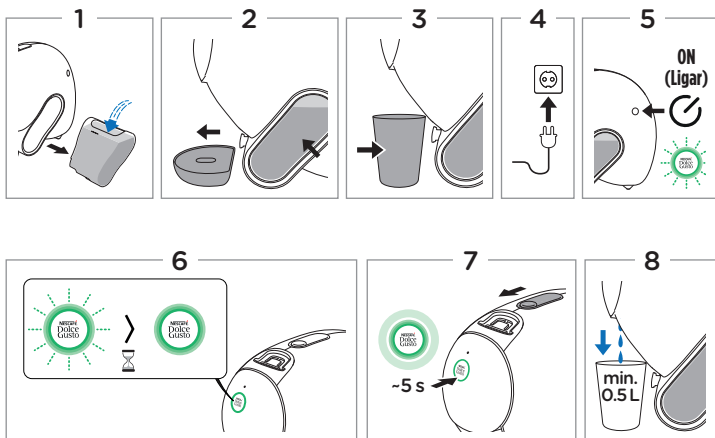


# ENXAGUAR

(ANTES DA PRIMEIRA UTILIZAÇÃO)

# RINSE

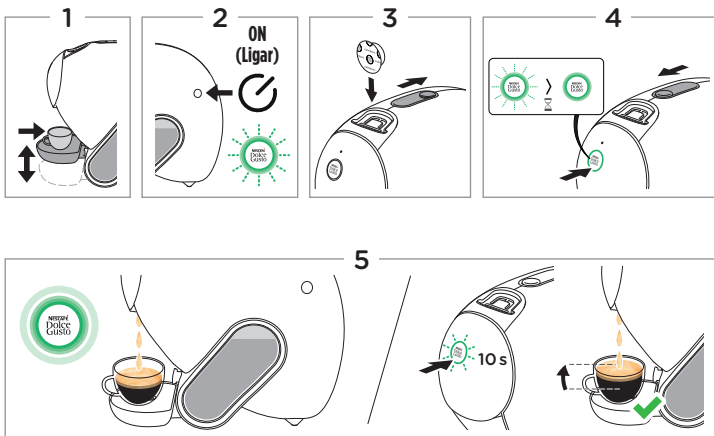
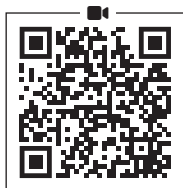
(BEFORE FIRST USE)





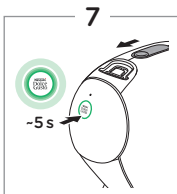
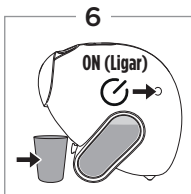
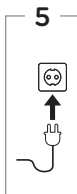
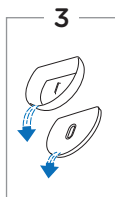
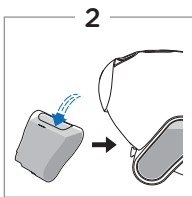
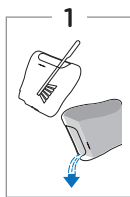
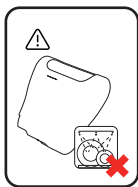
# PREPARAÇÃO DA BEBIDA

## BEVERAGE PREPARATION





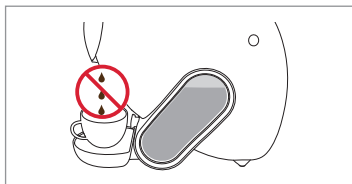
**LIMPAR**  
(REGULARMENTE)  
**CLEAN**  
(REGULARLY)





**DESCALCIFICAÇÃO**  
(NO MÍNIMO A CADA 6 MESES)

**DESCALE**  
(AT LEAST EVERY 6 MONTHS)



[www.dolce-gusto.pt](http://www.dolce-gusto.pt)





neo  
-CAFFÈ-

KRUPS

## HOTLINES

PT 800 200 153

08:30–20:30, SEG. A SÁB. (EXCETO FERIADOS)

[www.dolce-gusto.pt](http://www.dolce-gusto.pt)

1520015635